



A member of the Bouygues Construction group

SENSORY GARDEN DESIGN

for Hong Chi Winifred Mary Cheung Morninghope School 匡智張玉瓊晨輝學校

Presentation by
Dragages Hong Kong Limited

**“CHILDREN WITH ANY FORM
OF DISABILITIES ARE LIKE
BUTTERFLIES WITH A BROKEN
WING. THEY ARE JUST AS
BEAUTIFUL AS ALL OTHERS,
BUT THEY NEED HELP TO
SPREAD THEIR WINGS”**





A member of the Bouygues Construction group

THEME





CHILDREN WITH INTELLECTUAL DISABILITIES...

THEME



...BENEFIT FROM AN ENVIRONMENT
THAT STIMULATES THEIR SENSES



THE
FIVE
SENSES

Touch



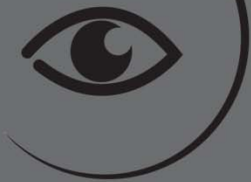
Hearing



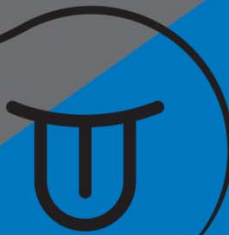
Smell



Sight



Taste



THEME



A member of the Bouygues Construction group

OVERALL MASTERLAYOUT PLAN



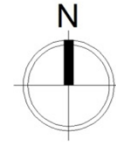
Address: 220 Lai King Hill Road, Kwai Chung, N.T., Hong Kong



**Hong Chi Winifred Mary Cheung
Morninghope School**

LOCATION PLAN

SENSORY GARDEN PROPOSAL IN CONTEXT



MAIN
ENTRANCE

LAI KING HILL ROAD

1a

1b

1c

4

3

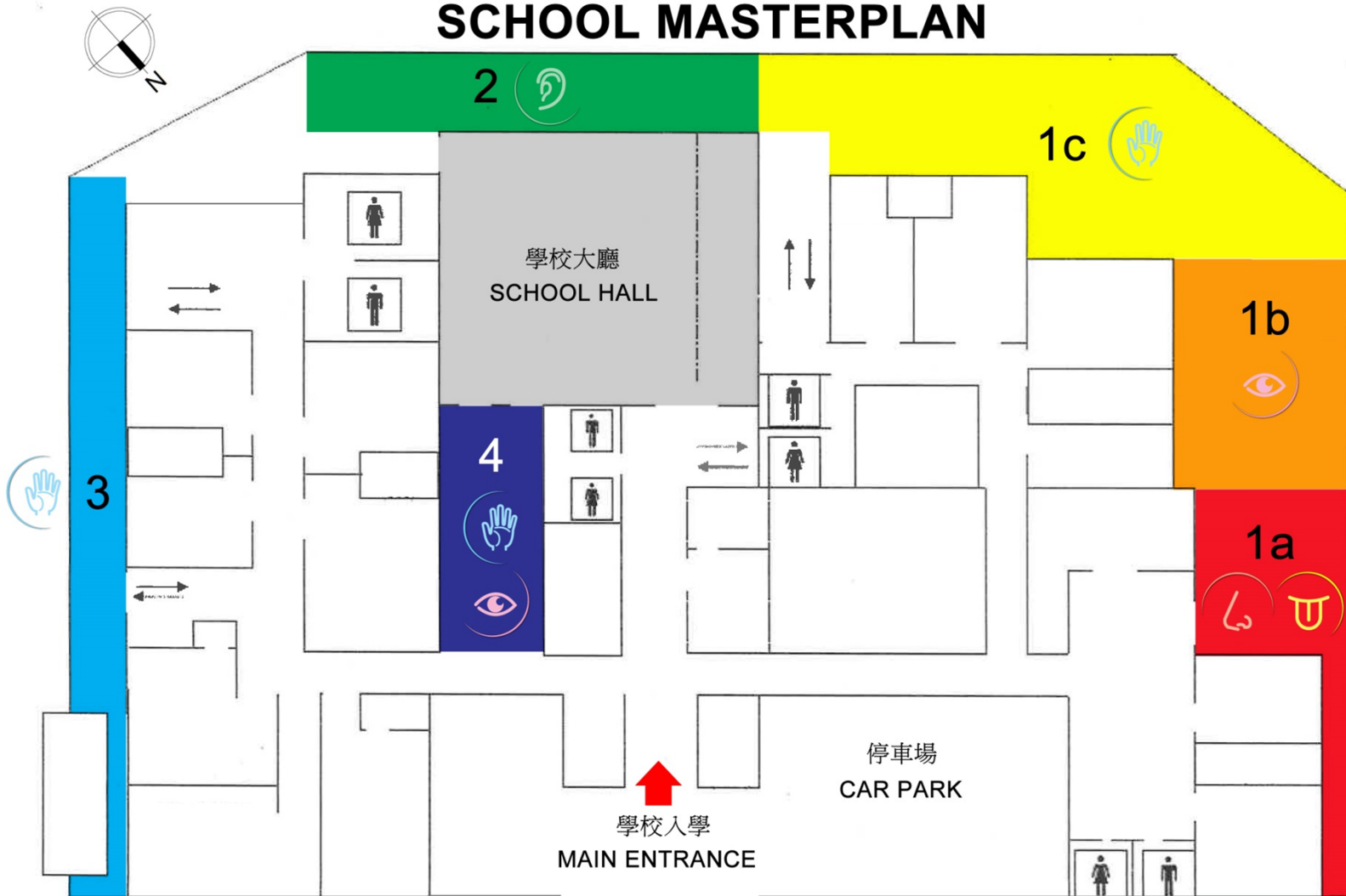
2

CONTEXT

匡智張玉瓊晨輝學校

HONG CHI WINIFRED MARY CHEUNG MORNINGHOPE SCHOOL

SCHOOL MASTERPLAN



Lai King Hill Road

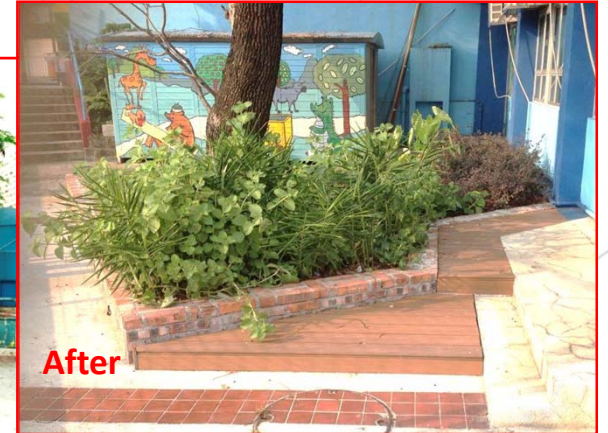
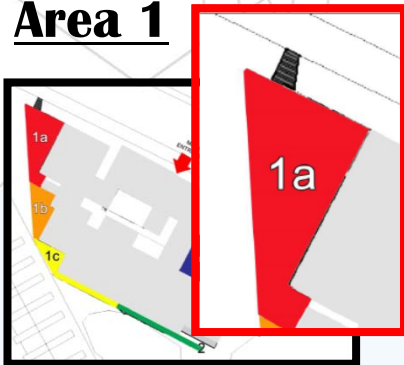
(Drawing not to scale)

SCHOOL MASTERPLAN

Area 1a: Smell & Taste

Sensory Garden:

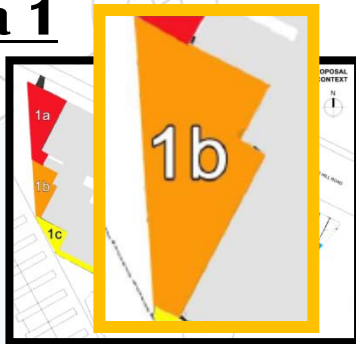
Area 1



Area 1b: Visual

Sensory Garden:

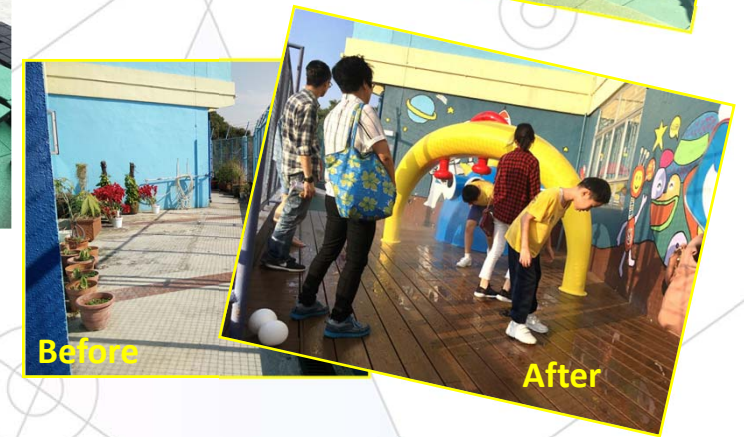
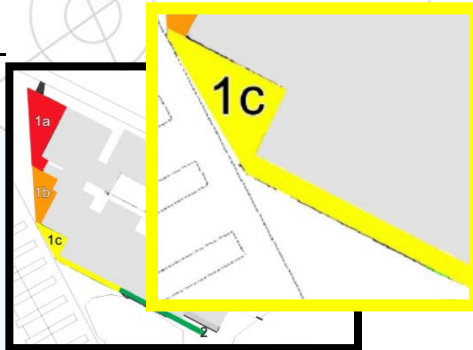
Area 1



Area 1c: Touch

Sensory Garden:

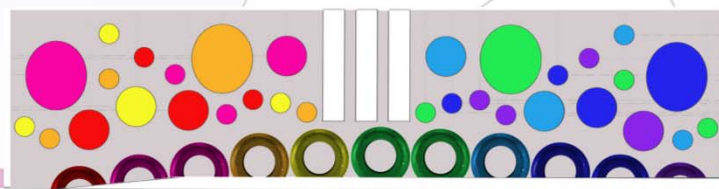
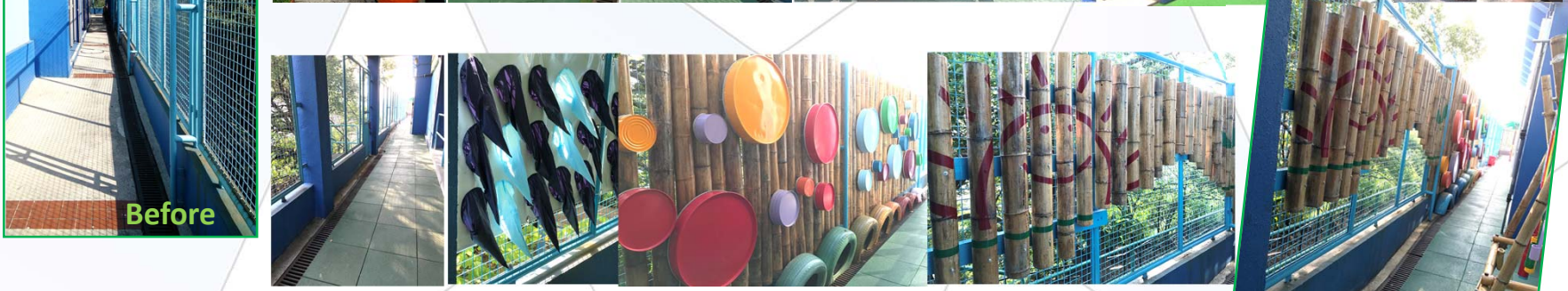
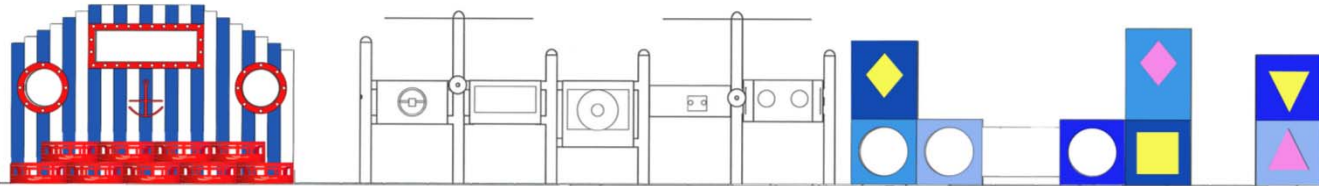
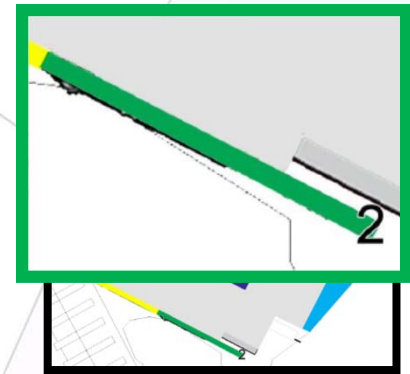
Area 1



Area 2: Sound

Sensory Garden:

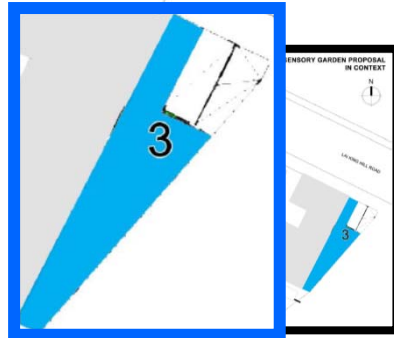
Area 2



Area 3: Touch

Sensory Garden:

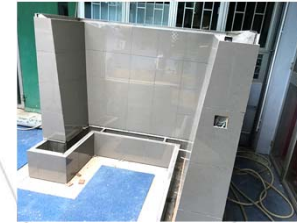
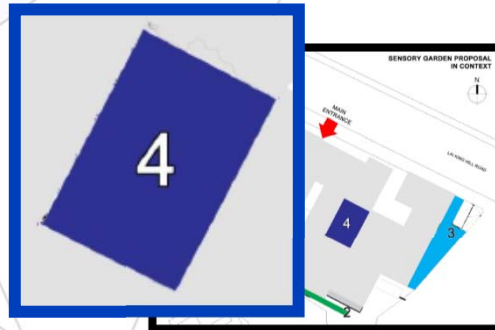
Area 3



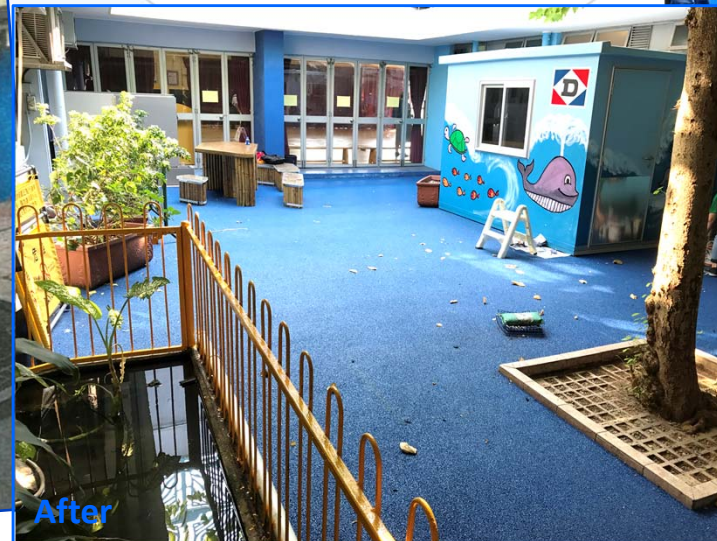
Area 4: Touch / Visual

Sensory Garden:

Area 4



Before



After

